



Installation view Herrick Gallery
The Mirage 1-2 70x70cm 2017
Oil and acrylic on linen

Biography

Peihang Huang explores time, history, memory and displacement in her practice. Starting with collages of images gleaned both from old historical sources and everyday media, she weaves the hidden relations between visual documents of the human experience through painting, photography and other project based approaches.

Born in Taipei, moved to U.S.A. with her academic parents at a very young age and then moved back to Taipei. She has an unique experience not only changing countries multiple times, but also heavily influenced by her feminist mother, seen as a modern woman in the society at the time. These experiences has provoked her research and practice into such subjects above.

Peihang holds both BA and MFA degree in Fine Art at National Taiwan Normal University, and received another MA in Fine Art at Chelsea College of Arts. Her work has been exhibited in many countries such as UK, Taiwan, China, Japan, Korea, and Germany. She currently lives and works in between London and Taipei; her main studio is located in Hackney, London.

Past and Present

2017-present

I have always been struck by how individual lives can be influenced by a larger historical context, and how our fragmented, collective pasts determine our present. My mother's family migrated from China to Taiwan during the Chinese civil war, and growing up as part of the Chinese diaspora significantly influenced my sense of self. After I moved to the UK, I started to investigate this aspect of my identity and how it relates to the broader concepts of time, history, and the influence of media on our contemporary lives.

I construct paintings by manipulating fragments of both old and recent photographs, images that may instill a sense of déjà-vu because of our exposure to them through mass media. I am interested in challenging perceptions of reality by exploring the hidden relations between these seemingly unconnected documents of human experience.

My visual investigation relies on spatial repetition and the creation of discontinuities between images. Each brushstroke moulds the canvas over time; building on top of one another to shape its finished form. The final painting is a compressed slice of time and space on a flat surface, questioning how we relate to our own history.



Past and Present 1
120x120cm 2017 Oil & Acrylic on linen



Installation view
in 'Beyond The Barricade'



The Boat and The Sea
180x110cm 2017 Oil & acrylic on linen



Detail



Past and Present 2 160x120cm 2017 Oil & acrylic on linen



Installation view
in 'Beyond The Barricade'



Past and Present 3

120x120cm
2018
Oil & acrylic on linen



The Beach
25x25cm 2017 Oil & acrylic on linen



The Fall
25x25cm 2017 Oil & acrylic on linen

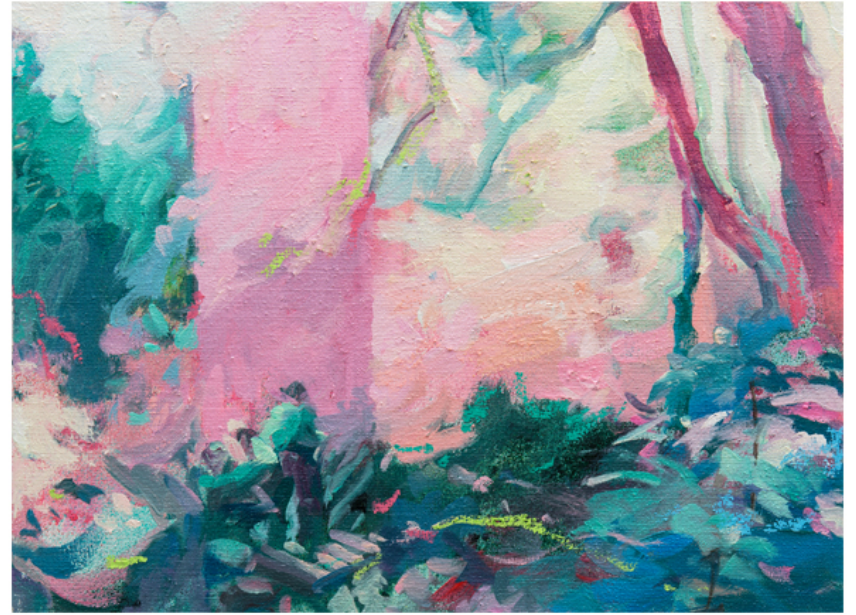


Past and Present 4

120x120cm
2018
Oil & acrylic on linen



In the Mountains
40x30cm 2018 Oil & oil pastel on Linen



In the Woods
40x30cm 2018 Oil & oil pastel on Linen



Past and Present 5

120x120cm
2019
Oil & acrylic on linen



In The Ditch Of History

120x100cm
2019
Oil & acrylic on linen

Lintukoto

Fiskars AiR, Finland



Lintukoto1 Giclée Fine Arts Prints on Hahnmuhle Barrya satin paper, 841 x 1189 mm 2018

In Finland, “Lintukoto” means the secret paradise in the Finnish legend that birds will fly to between the seasons. This set of works is embodiment of my thinking of the relationship between painting, time and nature in this particular Finnish village Fiskars.

Starting from a conceptual approach, the works has finally settle in the form of photography. In the winter of 2018 in the village of southern Finland, at the end of the world and limited resources, I thought about my perception as a painter: What is painting? How does a painter place oneself in the nature? What kind of changes can painting bring into a space? Could the intersecion of all of this affected by time? Questions as such become the motivation of this project.

The original idea was to place different sizes of planks in different outdoor locations in the village, and then the paintings must be involved in this space for a limited time. However, in this process, due to the instantaneous nature of the photographic shots, and the irresistible changes in the natural environment: such as changes in wind, light, time, the character of each different season and the randomness of the painting itself. Ultimately the work became an intersection of" the moment, the time and space and the artist's existence."



Gidée Fine Arts Prints on Hahnmuhle Barrya satin paper, 841 x 1189 mm 2018





Lintukoto 5 Giclée Fine Arts Prints on Hahnmuhle Barrya satin paper, 841 x 1189 mm 2018



Bedtime Stories/ Wonderland

Candy House
(Triptych) 310x180cm 2015 Oil & acrylic on canvas

The Bedtime Stories and Wonderland series are at the crossroads between image and imagination. I explore the relationship between an object and its dual image, deconstructing its reality, as I perceive it and rebuilding it blended with elements I borrow from other contexts. Each work was given a title linked to a fairytale or a fable like name, such as Yellow Brick Road, Over the Rainbow, Frozen or Candy House.

The fairytale-like themes often give a sugary appearance to a disturbing piece of content. It creates the visual experience equivalent of a guilty pleasure in a work where more serious, factual information slowly becomes discernible to the viewer. These elements hint at an uneasy mixture of concern, indifference and frustration towards reality, which contrasts with the eerily scenic world that I weave them into. But ultimately the joy of visual experience overcomes the theoretical discourse and the painting becomes whole.



Installation view in Saatchi
Gallery



Yellow Brick road

100x100cm

2015

Oil & acrylic on linen



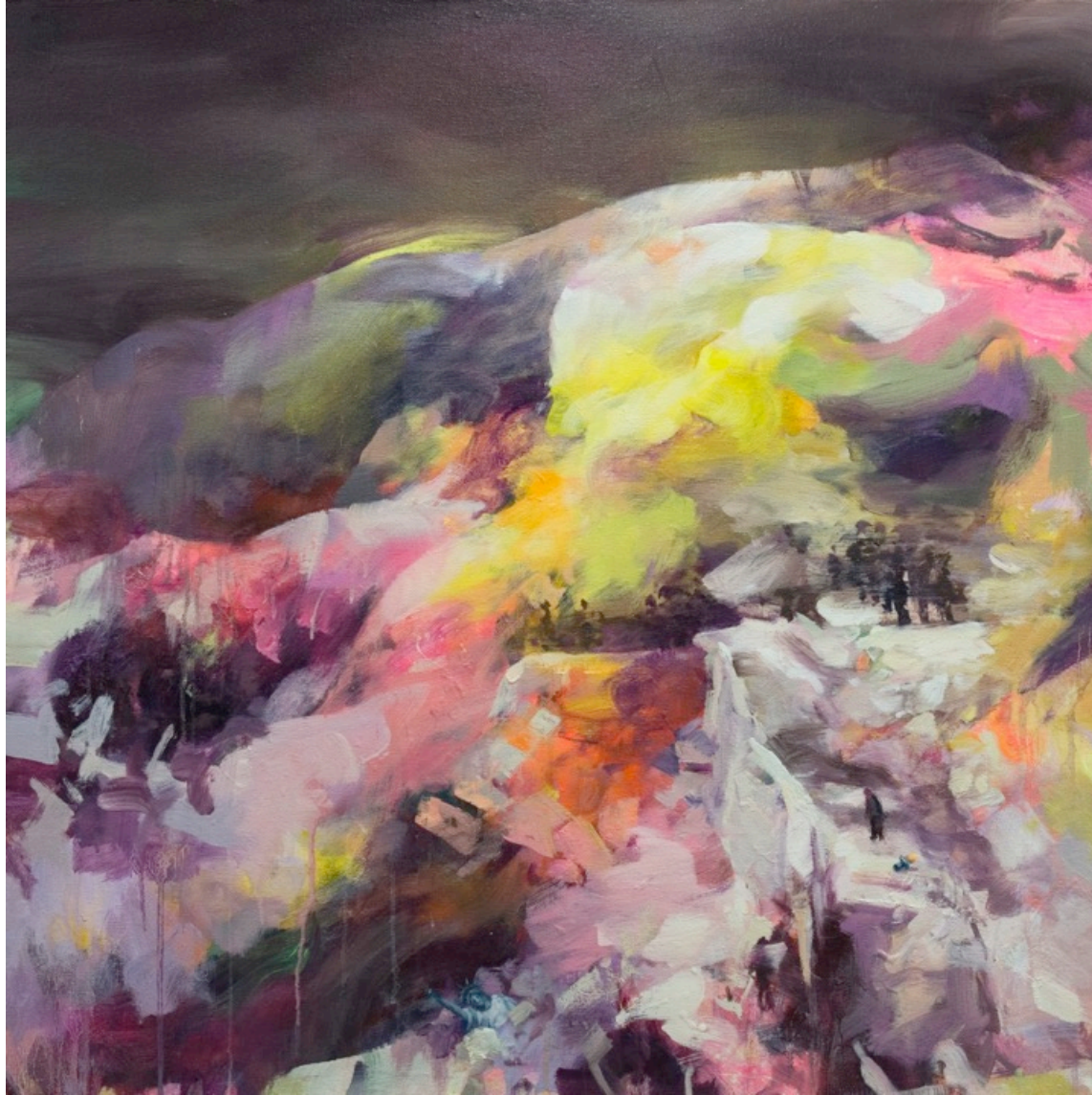
Frozen

150x110cm
2015

Oil & acrylic on linen



Left to right:
Treasure Mountain (Gold)
Treasure Mountain (Silver)
Lullaby 1
2015 Oil and acrylic on canvas



The Search

100x100cm

2016

Oil & acrylic on linen



Celebration

145x110cm

2016

Oil & acrylic on linen



Over The Rainbow

110x85cm

2015

Oil & acrylic on linen



La Fleur Du Mal 1/ 2

45x45cmc
2016
Oil & acrylic on linen



Installation view in Saatchi Gallery

Peihang Huang

peihang1@gmail.com

+44 7477462179

129-131 Mare Street E8 3RH London, UK

www.peihanghuang.com